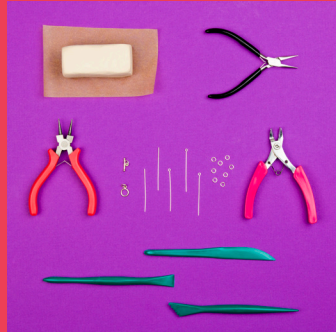
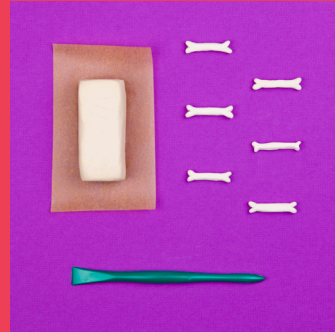




SKELETON NECKLACE



1. Gather your supplies: Crayola Air Dry Clay, round nose pliers, a wire cutter, jewelry pliers, clasps, jump rings, eyepins, headpins, a clasp and clay sculpting tools.



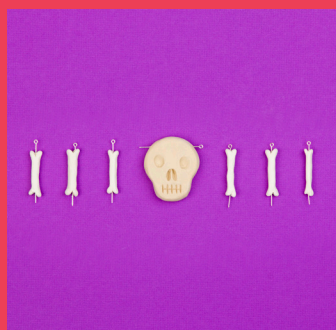
2. Using the Crayola Air Dry Clay and a clay sculpting tool, mold the shape of the skeleton bone beads. Make enough to circle your neck and extras for the two arms that will hang down off of the necklace.



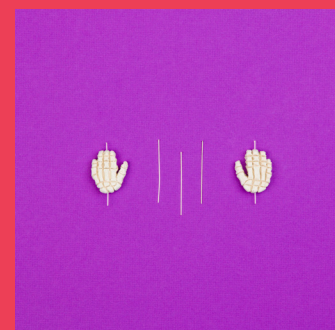
3. Mold the skull of the skeleton. The back of the skull should be flat, rather than round.



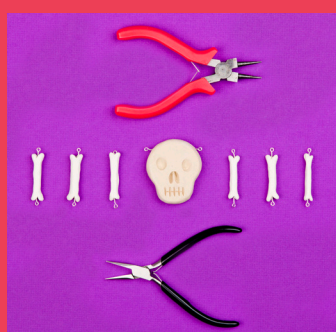
4. Mold the skeleton's hands. Use a clay sculpting tool to make the indentations of the fingers.



5. Place an eyepin lengthwise through each of the bones. Then, poke an eyepin through the top of the skeleton's skull. Allow them to dry and harden overnight.



6. Poke headpins through the hands lengthwise. Allow these to dry and harden overnight, too.



7. Use the jewelry pliers to hold the bone beads, then use the round nose pliers to make a loop at the open end of the eyepin. Do the same for the skull of the skeleton.



8. Repeat the last step with the hands, closing both ends of the headpins. If necessary, use a wire cutter to trim off any excess wire. The loops at both ends of the headpins should be similar to the size of those on the eyepins.



9. Using the jewelry pliers to hold each piece steady, connect the bones together with a jump ring in between each bead. Two strands of bone beads should hang down adjacent to the skull.



10. Using the jewelry pliers, attach the hands to the end of the two strands of bone beads that hang down. Attach the clasp to the two ends of the necklace.



11. Dress to impress with this skeleton necklace – it even dances when you dance! #HalloweenHills